

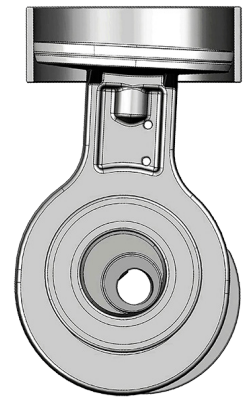
KP Series Unitary Piston Compressor/Vacuum Pumps

TruNorth Compressors and Vacuum Pumps are completely oil-less and come with our relentless commitment to quality, performance and overall service to our customers. Our business mindset is to provide customers exactly what they require. Flexible component and product designs allow for a wide range of customization in flow and pressure performance, input power, port locations, accessories and more!



FEATURES

- Thin-walled, Hard Coated Anodized Cylinder
- Oil-less, Non-lube PTFE Piston Seal
- Permanently Lubricated Ball Bearings
- Balanced Eccentric/Connecting Rod Assembly
- Epoxy E-Coated Wetted Aluminum Components
- Stainless Steel Valves, Retainers and Screws
- Die Cast Aluminum Components
- High Torque DC Motor
- Vibration Isolators

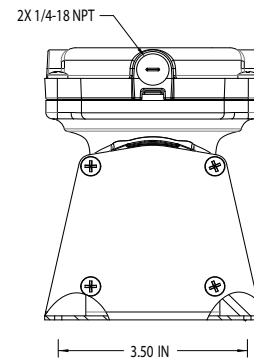
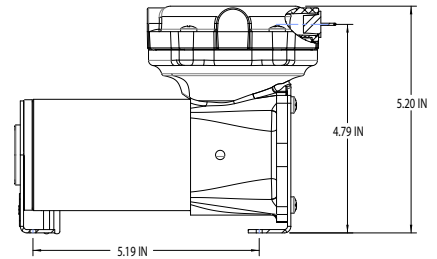
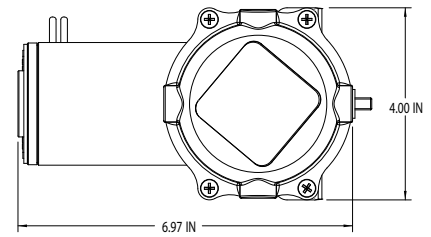


BENEFITS

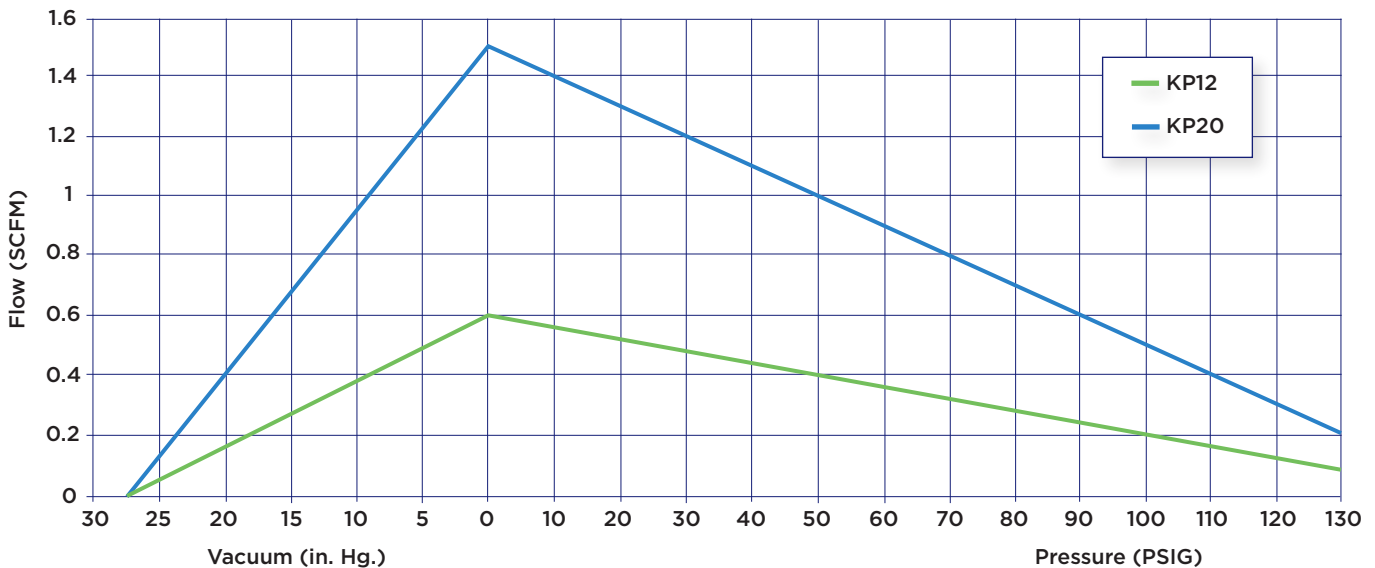
- Long Service Free Life
- Low Vibration & Sound Level
- Corrosion Resistance
- Cool Operating Temperatures
- Restart Against Load

KP Series Performance Data

| Model Number | KP12 | KP20 |
|---------------------------------|------------------|------------------|
| Head Configuration | Pressure/Vacuum | Pressure/Vacuum |
| Free Air Flow | .60 SCFM | 1.50 SCFM |
| Max Intermittent Pressure | 150 PSIG | 150 PSIG |
| Max Restart Pressure | 150 PSIG | 150 PSIG |
| Max Vacuum | 27" Hg | 27.5" Hg |
| Max Restart Vacuum | 27" Hg | 27.5" Hg |
| Max Ambient Air Temp | 125° F | 125° F |
| Min Ambient Start Temp | -20° F | -20° F |
| Motor Voltage | 12V DC | 12V DC |
| Motor Type | Permanent Magnet | Permanent Magnet |
| Current at Rated Load | 11.6 Amps | 14.6 Amps |
| Power at Rated Load | 139 Watts | 175 Watts |
| Starting Current (Locked Rotor) | 55 Amps | 65 Amps |
| Min Full Load Speed | 3000 RPM | 2475 RPM |
| Thermal Protector | Optional | Optional |
| Net Weight | 4.9 lbs | 5 lbs |



Note: All of the compressors & pumps manufactured by TruNorth are very customizable for OEM applications. If you don't see the performance data you're looking for, please contact us at 855-449-7867.



The information presented in this material is based on technical data and test results of nominal units. It is believed to be accurate and reliable and is offered as an aid to help in the selection of TruNorth products. It is the responsibility of the user to determine if this product is suitable for the intended use. The user assumes all risk and liability whatsoever in connection therewith. TruNorth does not warrant, guarantee or assume any obligation in connection with this information.